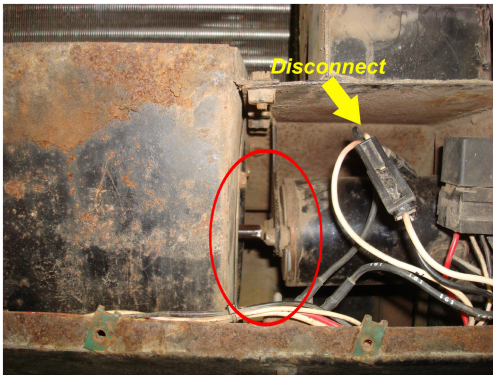


1. Remove evaporator/blower housing cover.
2. Identify and cut "long" shaft of motor. Remove 9 bolts of large blower wheel housing assembly. See Figures 1 & 2.
3. Disconnect Motor Plug-in. See Figure 1



**FIG. 1** Cut Shaft

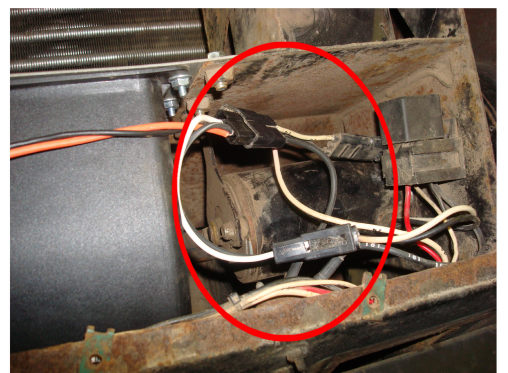


**FIG. 2** Remove Blower Housing

4. Install new BM4056 blower assembly with 9 original mounting bolts. See Figure 3
5. Plug blower assembly harness into existing harness as shown. See Figure 4
6. Re-install evaporator/blower housing cover.



**FIG. 3** Install New Assembly



**FIG. 4** Install New Blower Harness