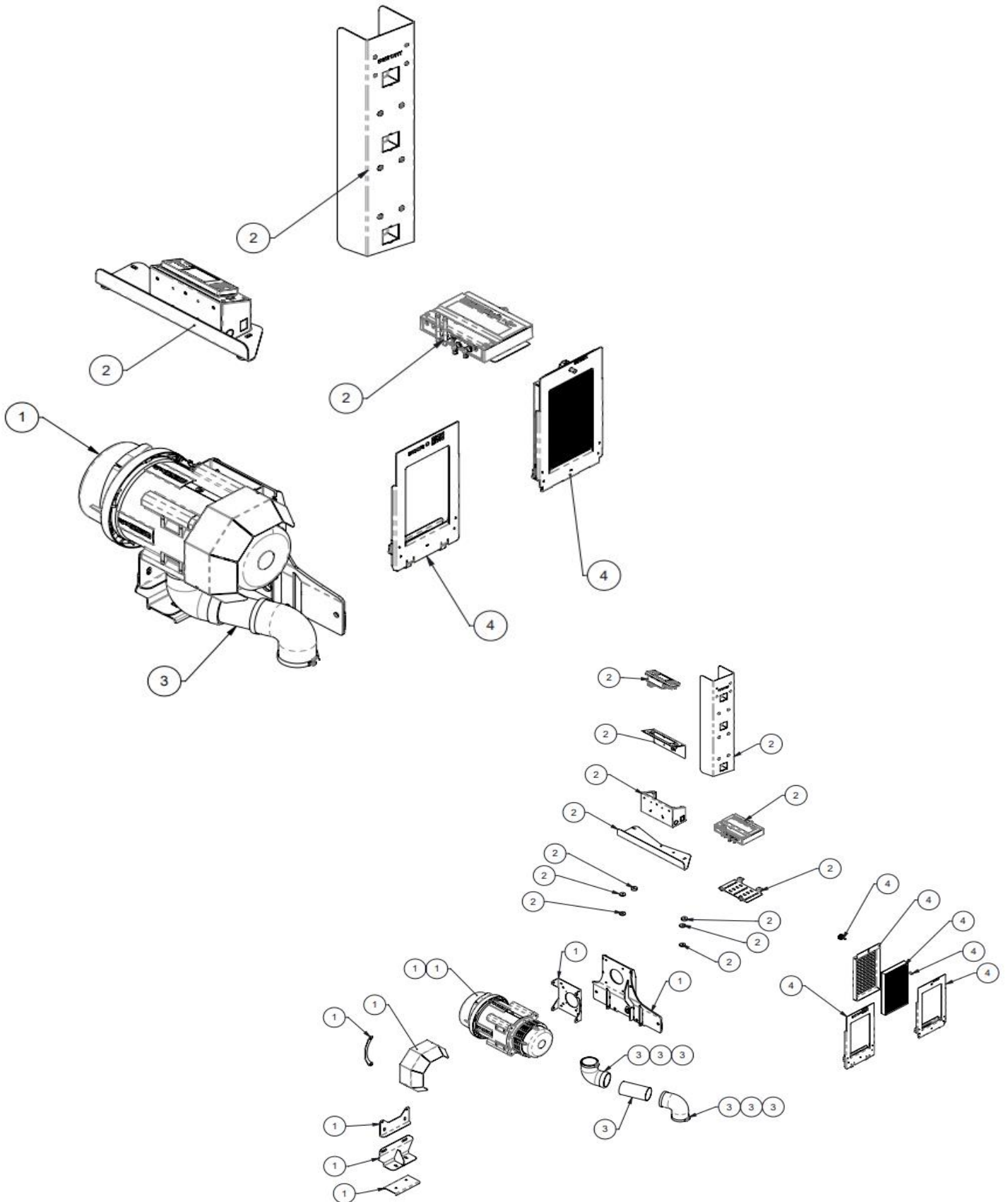


CAT DOZER D9T/D10T/T2/D11T/T2/ FUSION INSTALL - GUIDE - 710066



Breathe Safe

**RS 20 COMPLIANT DUAL
HEPA SYSTEM**



**Kit Part No: 100838GA System Type:
D9T D10T D11T D10T2 D11T2 FUSION TL4 DH OG**

Item No.	Part No	Rev	Description	Qty	Colour	Group
1	100033A01	12	Pressuriser Module	1	Black Satin 27219268	Module
2	100838M01	0	Monitor Mount Module (Universal Kit)	1	Black Satin 27219268	Module
3	100033P01	0	Pipework Module	1	Black Satin 27219268	Module
4	100838R01	0	Return Air Module (Universal Kit)	1	Black Satin 27219268	Module



Ensure all OEM glass / panels are in place & door seals are in good condition.

Cabin needs to be clean & Hepa vacuumed prior to install.

Remove OEM Fresh air filter or pressuriser & discard.

Remove seat & floor plates.
*This is a must.

*Run any wiring under plates before fitting.



Apply 50mm adhesive foam tape to mating edges of floor plates & fix into place.

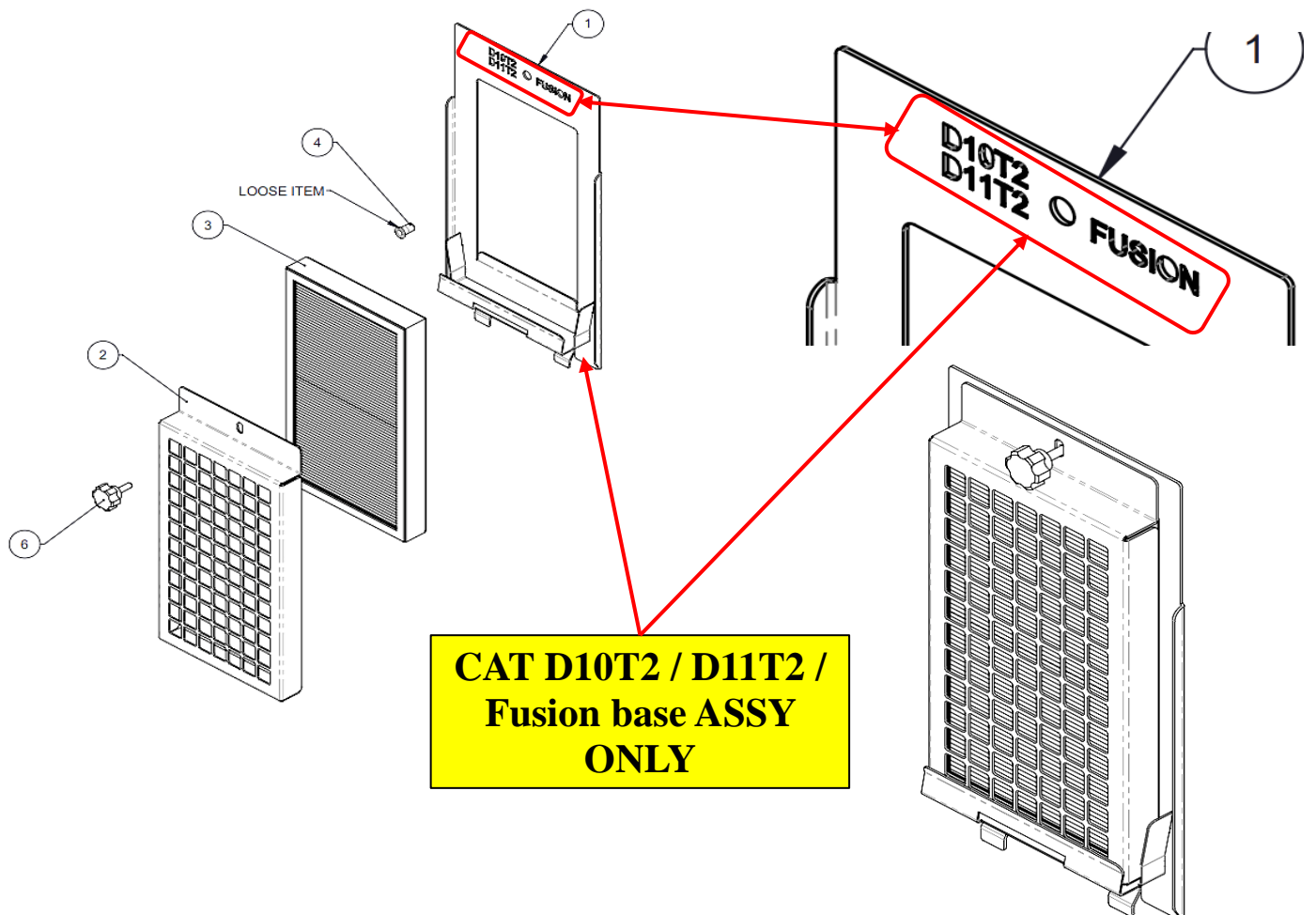
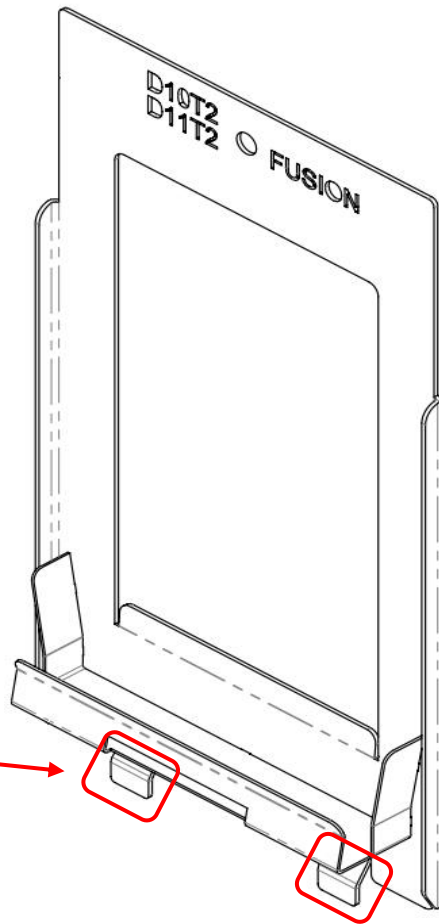
1. Locate OEM RAF assembly behind the seat.
2. Remove OEM Filter frame grill & discard.
3. Remove OEM filter & discard.

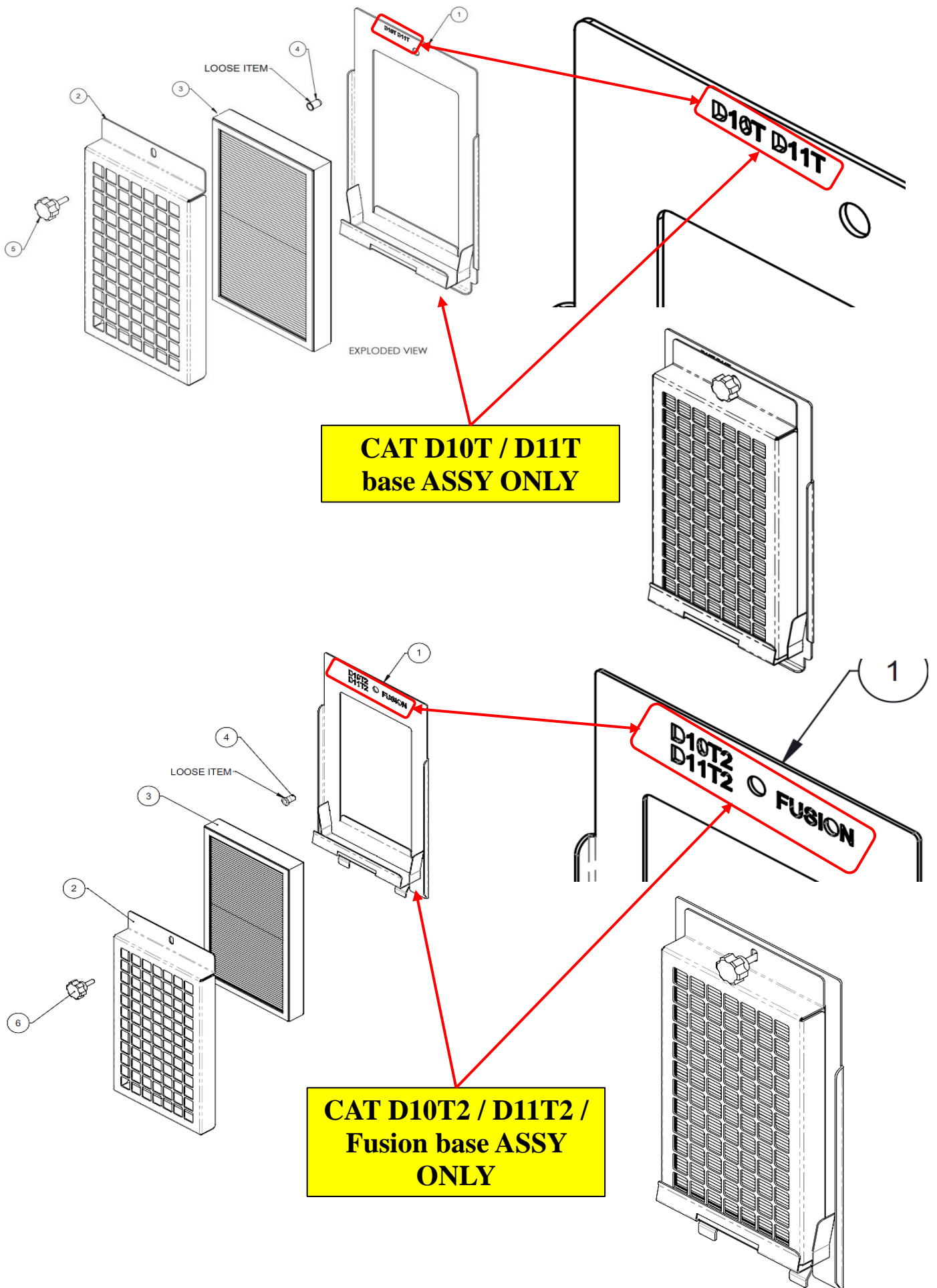


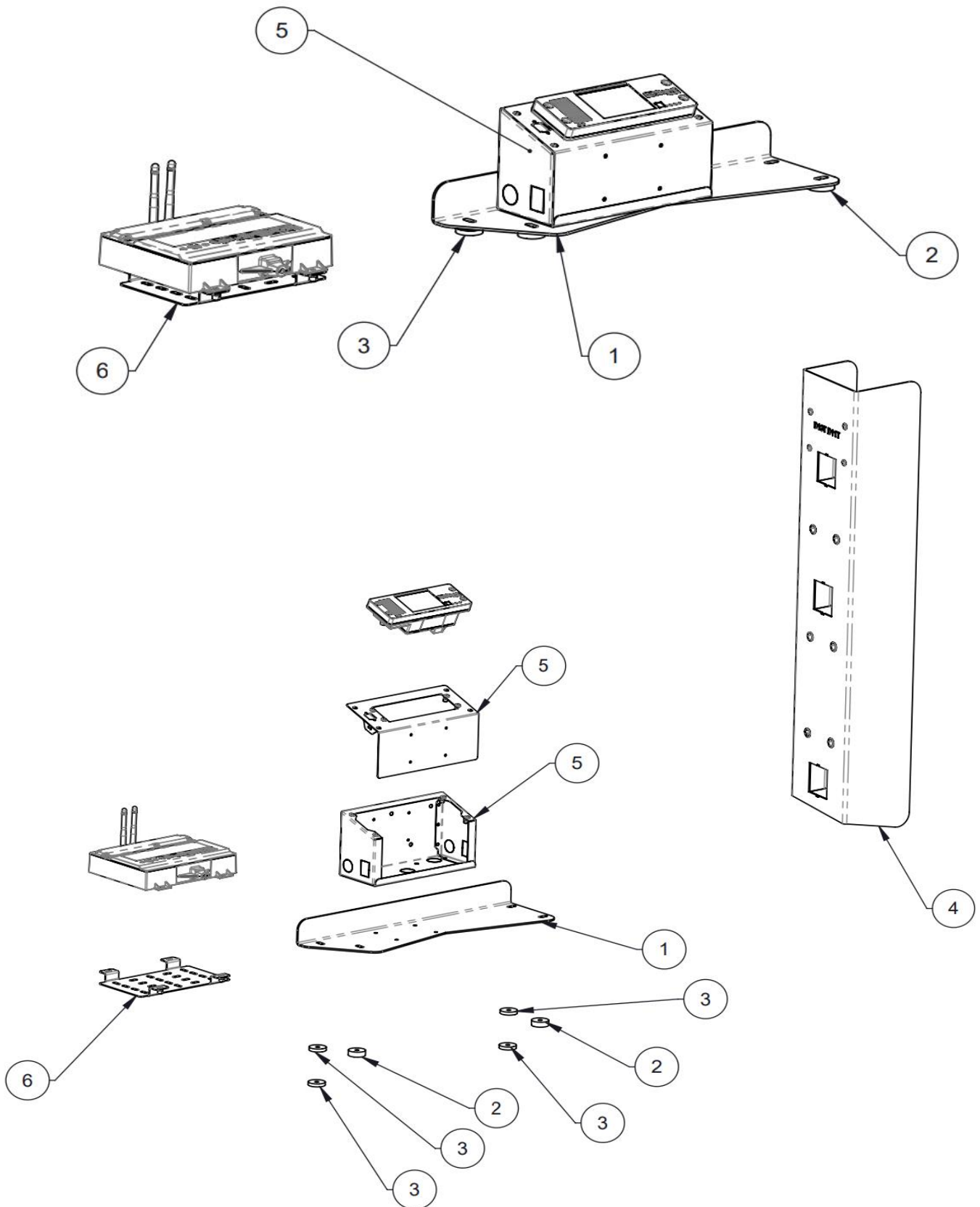
4. Remove OEM filter frame & discard.



5. Bond Filter frame base into position. Locate tabs into OEM slots.





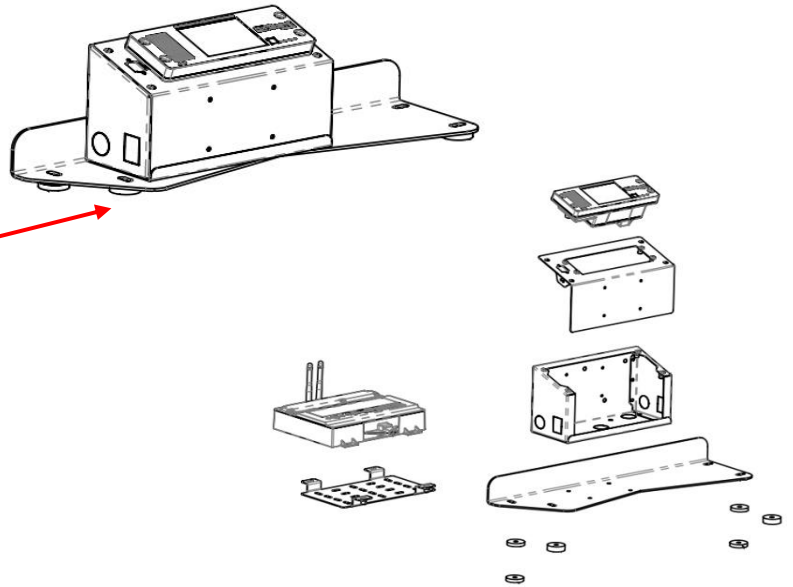


Module Number: 100838M01

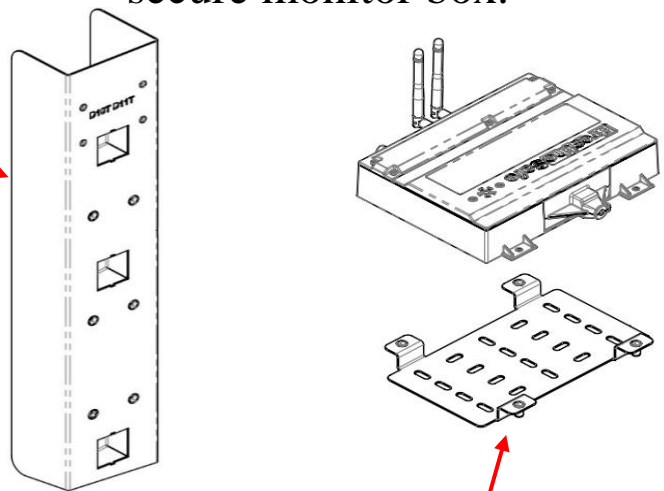
Item No.	Part No	Rev	Description	Qty	Material	Thickness	Colour	Group
1	100032-M401	1	D10T T2 D11T T2 / Fusion Horizontal Monitor Bracket	1	-	3	(As Req'd)	-
2	17185	0	30 o/d 7 i/d 10mm Spacer	2	MS G250	10	(As Req'd)	-
3	17186	0	30 o/d 7i/d x 6mm Spacer	4	MS G250	6	(As Req'd)	-
4	100032M02	0	D10T D11T Vertical Monitor Bracket Assy	1	-	-	Black Satin 27219268	Weld Assy
5	250101	1	Monitor Box, LRG	1	-	-	(As Req'd)	Stock Item
6	250558	0	Universal Bracket for OnGuard Main Unit (All Types)	1	-	-	(As Req'd)	Stock Item



Mount controller on supplied plate
beside RH joystick.
*suits late model T2 cabs only



Early cabins require the monitor to
mount in alternate location, RH pillar
being the most common.
Drill & tap mounting location &
secure monitor box.



Remove OEM pressuriser

Mount Onguard main
unit & controller ASSY
in machine cab with
supplied brackets



OEM pressuriser removed



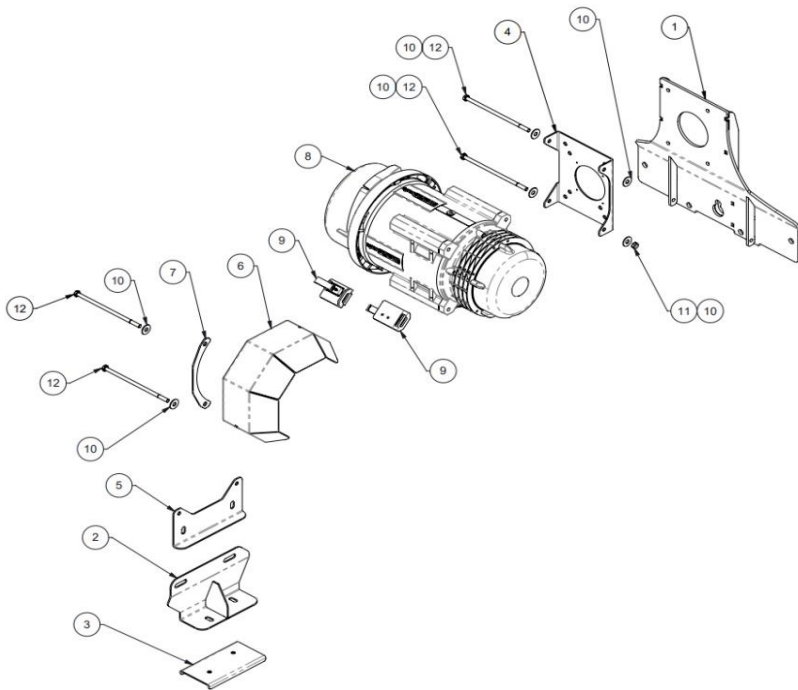
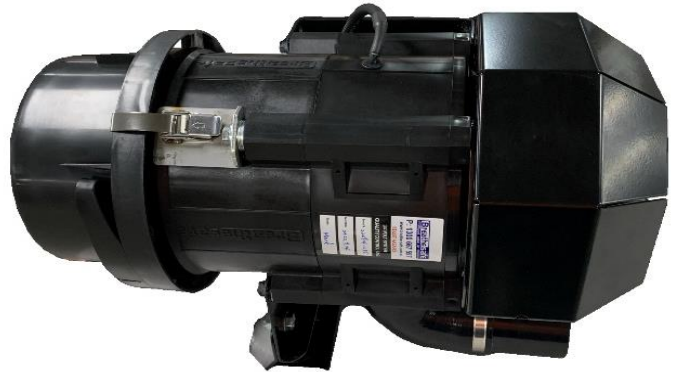
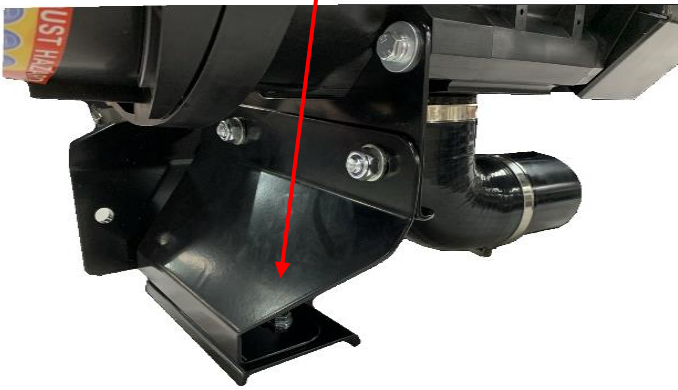
Fit supplied bracket & M10 bolts to OEM intake location on LH side of cabin.



High pressure filtration unit installed

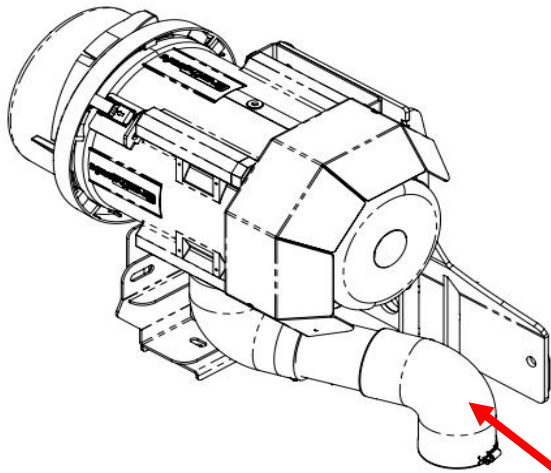


High pressure filtration unit installed inc. brace

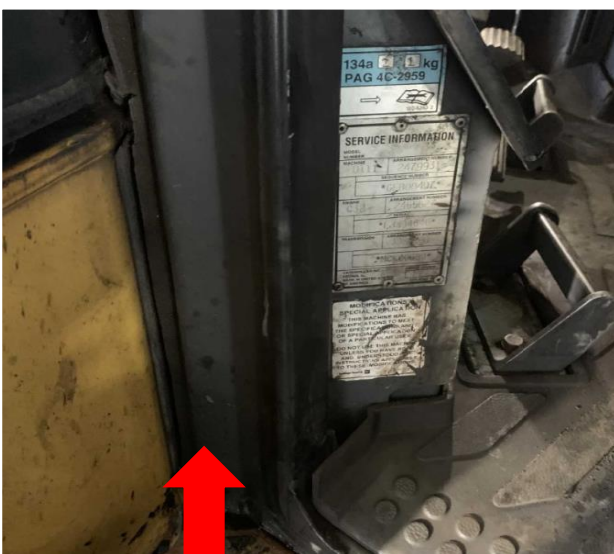




High pressure filtration unit installed



Use 2 x 90-degree silicone elbows & stainless pipe joiner to duct into HVAC.



Seal front corner casts & along front channel between engine bay & cab using bitumen foam / silastic.

Connect customer 15amp ignition supply to 2 Pin plug at main unit.

Run pressure sensing tube to the outside of the cab (sense to atmosphere)

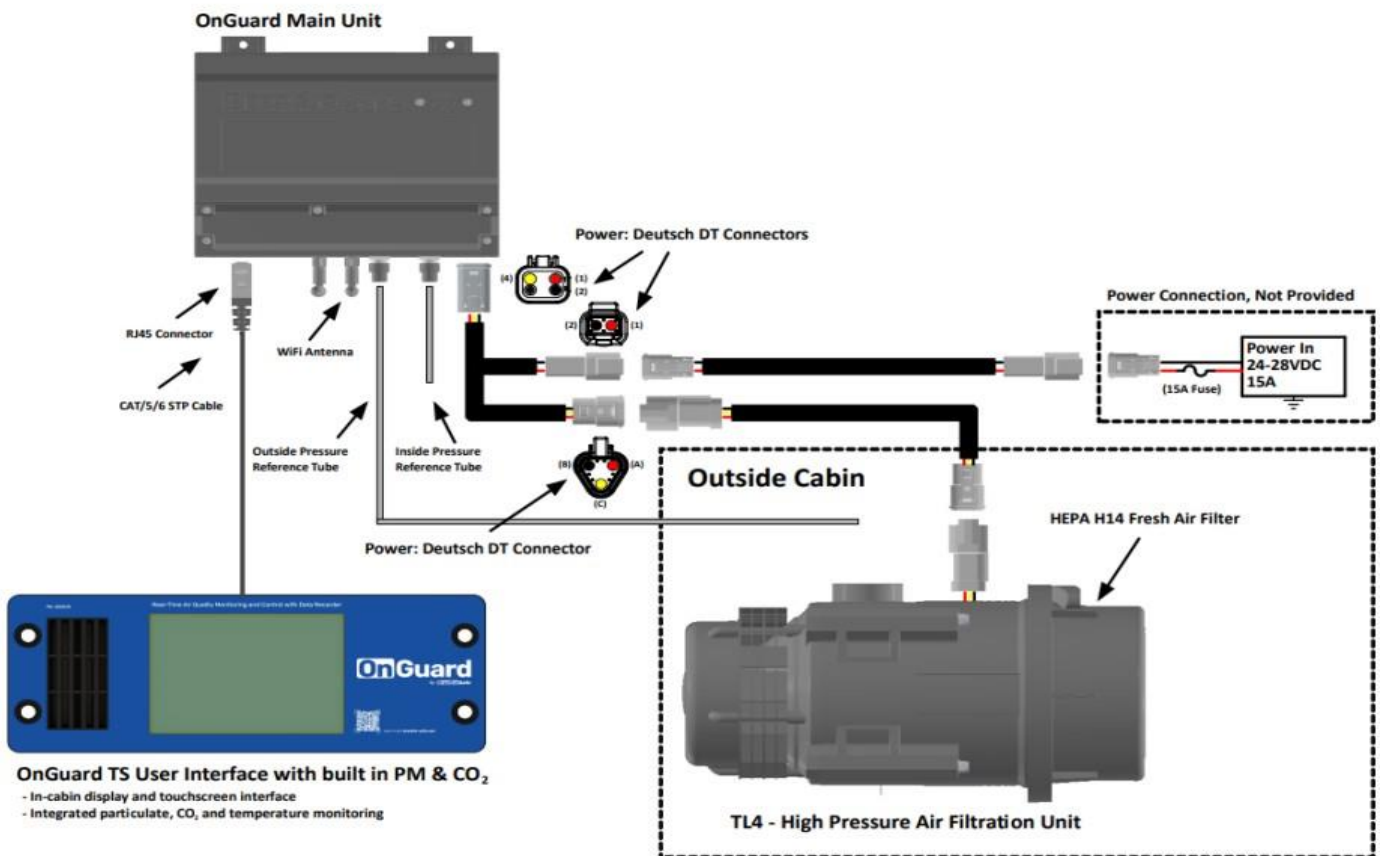
Run loom from main unit to pressuriser (HPAFU) & connect using 3 pin deutsch plug.

Installation Manual

OnGuard™ Active Unit

3.2 Wiring Diagram

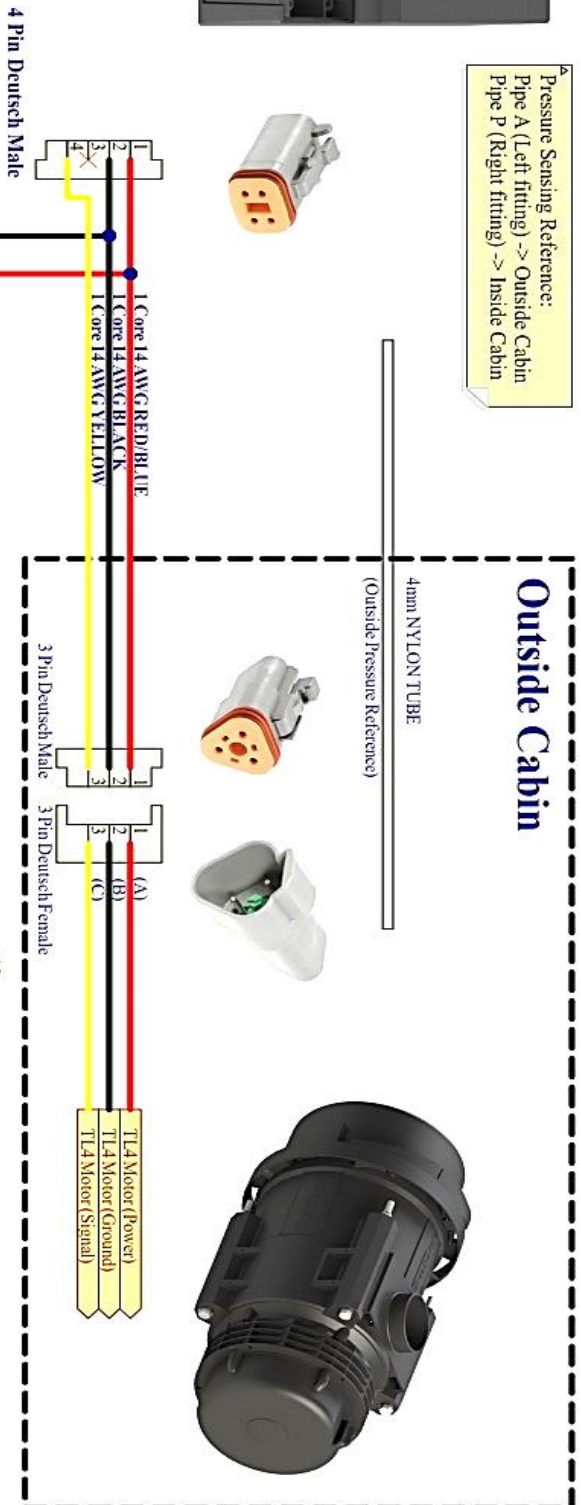
3.2.1 Active Unit: Singlezone





Pressure Sensing Reference:
 Pipe A (Left fitting) -> Outside Cabin
 Pipe B (Right fitting) -> Inside Cabin

OnGuard Pod Wiring:
 Front 3 ports only. Back port is reserved for ethernet connections and will damage the OnGuard if a pod is connected.
 Any port can be used with any pod.



Power Supply Requirements:
 +24VDC
 15A Fused
 Live via vehicle ignition system

